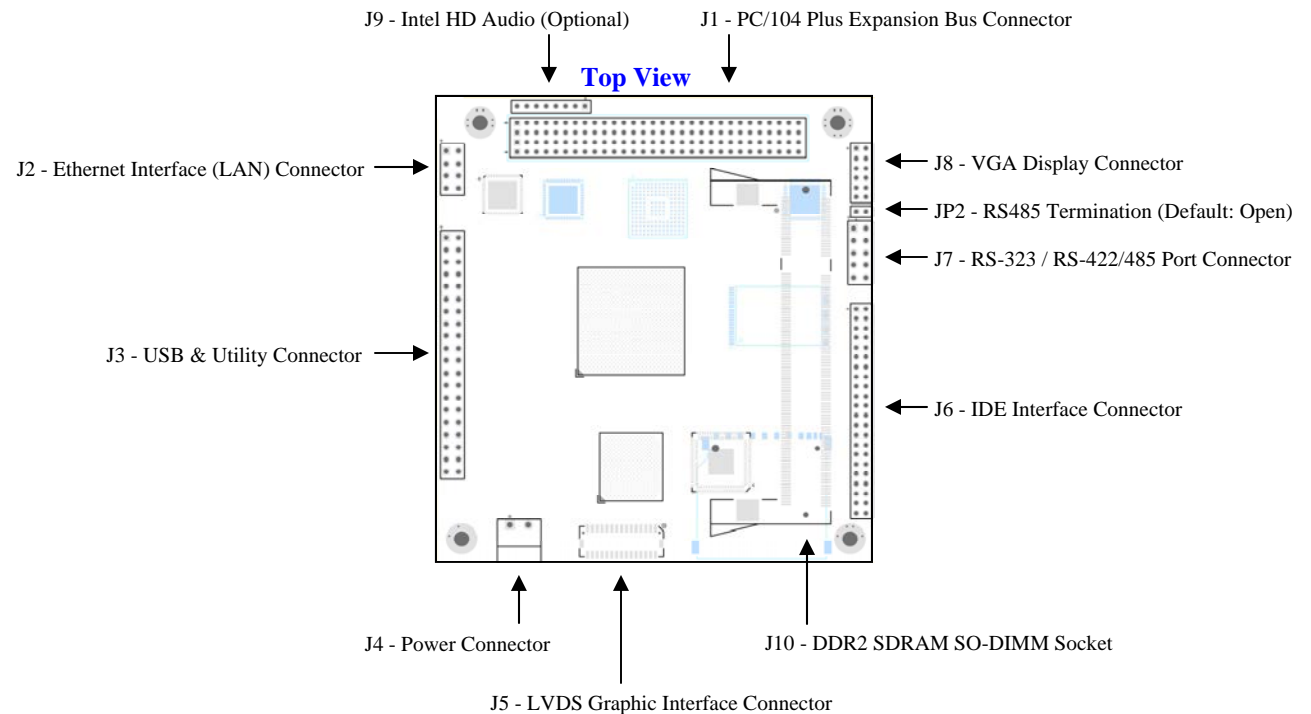


## Hesper (LW-P104-IAZ1) Quick Start Guide

### Connectors List

Ref.	Description	Pitch
J1	PC/104 Plus Expansion Connector	2 mm
J2	Ethernet Interface (LAN) Connector	0.1 In
J3	USB & Utility Connector	0.1 In
J4	Power Connector	3.81 mm
J5	LVDS Graphic Interface Connector	
J6	IDE Interface Connector	2 mm
J7	RS-232/RS-422/485 Port Connector	0.1 In
J8	VGA Display Connector	2 mm
J9	Intel HD Audio Connector (Optional)	2 mm
J10	DDR2 SDRAM SO-DIMM Socket	
J11	SD Card Socket	



### J4 - Power Connector

Signal	Pin	Pin	Signal
Ground	1	2	+5V (or +6-18V)

### Jumper Setting Table

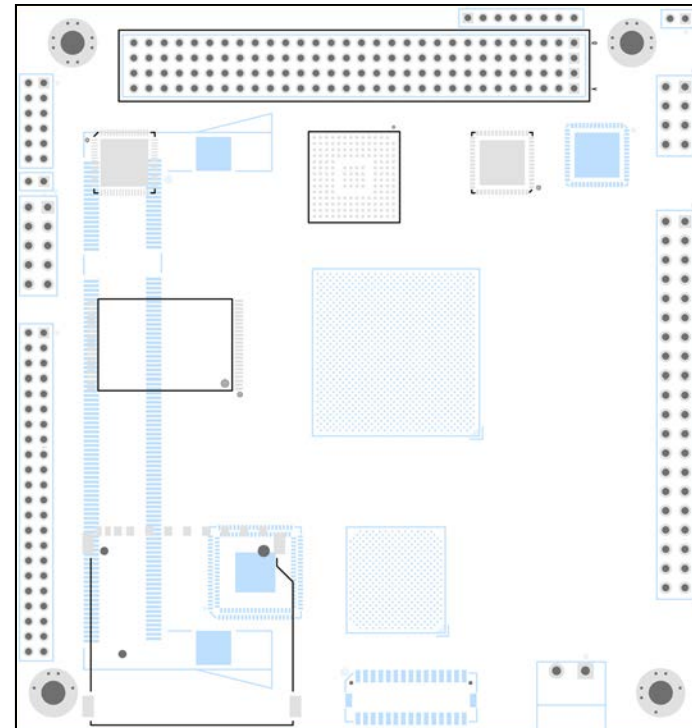
Reference	Function	Position		Default
		Closed	Open	
JP1	RS-422/485 Termination	Terminated	No Termination	Open

# Hesper (LW-P104-IAZ1) Quick Start Guide (Continue)

## J3 – USB & Utility Connector

Description	Signal	Pin	Pin	Signal	Description
+5V Power	+5V	1	2	+5V	+5V Power
USB 1 Data Positive	USBP1P	3	4	USBP0P	USB 0 Data Positive
USB 1 Data Negative	USBP1N	5	6	USBP0N	USB 0 Data Negative
Ground	Gnd	7	8	Gnd	Ground
+5V Power	+5V	9	10	+5V	+5V Power
USB 3 Data Positive	USBP3P	11	12	USBP2P	USB 2 Data Positive
USB 3 Data Negative	USBP3N	13	14	USBP2N	USB 2 Data Negative
Ground	Gnd	15	16	Gnd	Ground
+5V External	+5V	17	18	+5V	+5V External
USB 5 Data Positive	USBP5P	19	20	USBP4P	USB 4 Data Positive
USB 5 Data Negative	USBP5N	21	22	USBP4N	USB 4 Data Negative
Ground	Gnd	23	24	Gnd	Ground
IrDA Transmit Data	IrTX	25	26	IrRX	IrDA Receive Data
+5V Power	+5V	27	28	+5V	+5V Power
Keyboard Clock	KClk	29	30	MClk	Mouse Clock
Keyboard Data	KDat	31	32	MDat	Mouse Data
Ground	Gnd	33	34	Gnd	Ground
Ground	Gnd	35	36	Speaker	Speaker Output
Ground	Gnd	37	38	SysReset	System Reset
Ground	Gnd	39	40	BatRTC	RTC Battery

Bottom View



J11 - SD Card Socket

## J8 – VGA Display Connector

Description	Signal	Pin	Pin	Signal	Description
Ground	Gnd	1	2	Red	Red
Ground	Gnd	3	4	Green	Green
Ground	Gnd	5	6	Blue	Blue
Ground	Gnd	7	8	HSync	Horizontal Sync
+5V Power	Vcc	9	10	VSync	Vertical Sync
I2C Bus Data	SDA	11	12	SCL	I2C Bus Clock

## J7 – RS323 / RS485 Port Connector

Description	Signal	Pin	Pin	Signal	Description
Data Carrier Detect 1	DCD*	1	2	DSR*	Data Set Ready 1
Receive Data 1	RXD	3	4	RTS*	Request To Send 1
Transmit Data 1	TXD	5	6	CTS*	Clear To Send 1
Data Terminal Ready 1	DTR*	7	8	RI*	Ring Indicator 1
Ground	Gnd	9	10	Gnd	Ground